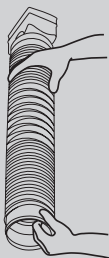




INSTRUCTIONS

FLEXIBLE EXTENSION EXTENSION FLEXIBLE

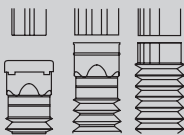


Can be elongated from 2' to 4'
by stretching the tube

S'allonge 2 à 4 pi en dépliant le tube

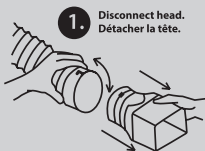


Can be buried.
S'enterre.

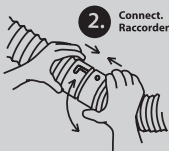


Fits 2" x 3", 3" x 4" and 4"
round downspouts. Secures
to downspout with 2 screws.

S'adapte aux descentes
de 2 x 3 po, 3 x 4 po et 4
po rondes. Se fixe avec 2 vis.



1. Disconnect head.
Détacher la tête.



2. Connect.
Raccorder.

Can be elongated by connecting several extensions together or
connected to 4" drain tile.

Se prolonge en raccordant plusieurs
extensions entre elles ou à un drain de 4 po.